



4200/4500 (2 axles)  
3900/4200 (3 axles)

< 10000

\* Technical data and features subject to change without notice

### Pumping unit technical data

		HP908EC	HP1608EC
Max. theoretical output	m <sup>3</sup> /h	95	160
Max. pressure on concrete	bar	80	80
Concrete cylinders (diam. x stroke)	mm	200 x 1650	230 x 2100
Concrete hopper capacity	l	550	550
Hydraulic circuit		closed	closed

Super compact machine mounted on 4x2 4200/4500\* or 6x4 3900/4200\* wheelbase trucks for excellent maneuverability.

Contained stabilisation dimensions for easy placement in all types of job sites.

Wide platforms up to 4.2 m on both sides ("pipe storage" optional).

### Control System with pumping unit HP908EC | HP1608EC

#### Smartronic

Integrated color LCD	Diagnostics
Counters	Capsense rear panel
Pumping unit management	

#### Optional Smartronic Plus



The automatic continuous verification of the center of gravity of the machine guarantees the maximum safety of boom movement and the maximum possible coverage of the job area, even with partial opening of the stabilization.



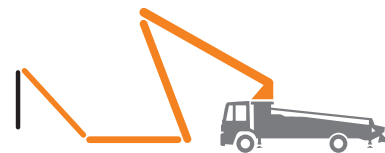
MBE  
Maximum boom  
extension control



Automatic  
RPM  
Management

#### Optional Smartronic Pro

Automatic boom folding/unfolding	Virtual span
ASC 2.0	Angle fence
Boom antibouncing system	Section block
Radio remote control with display	Constant height



Type ZR

### Placing boom technical data

		4ZR 24/20
Pipeline diameter	mm	125
Max. vertical reach	m	23.7
Max. horizontal distance (from center of slewing axis)	m	19.4
Min. unfolding height	m	4.8
Sections number		4
1st section opening angle		90°+5°
2nd section opening angle		180°
3rd section opening angle		25°
4th section opening angle		25°
Rotating angle		+/-270°
End hose	m	3





# STEELTECH 20m Series

# K24L

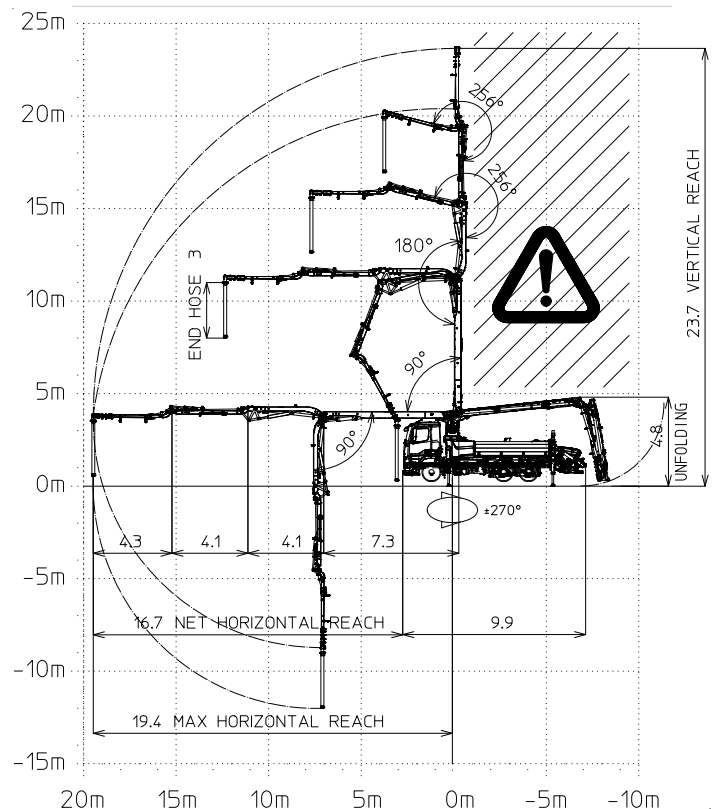
## Standard Equipment

- Front "X" style outriggers for a quick set-up and easy pump placement in narrow areas
- Driven by PTO or gear box
- Boom control by means of proportional distributor
- Safety device upon opening of concrete discharge door and hopper grille
- Emergency device for pumping group
- 2 Hetriconic proportional radio controls with 3 manipulators
- Emergency radio control cable 20 m
- Water tank with 600-litre capacity (plastic)
- Medium pressure water pump (50 l/min - 50 bar)
- LED lights for stabilisation and hopper lighting
- Double layer piping with chromium carbide inserts on the entire piping line
- Washing accessories
- High resistance of the components most subject to wear ("S" valve, wear plate, compensating ring)
- Declaration of conformity supplied with the user and maintenance manual








## Main Options

- Smartronic Plus (Smartronic + ASC Advanced Stability Control)
- Smartronic Pro: In addition to the Smartronic Plus functions, provides ASC2.0 stability control, ABC boom oscillation control (Antibouncing), Virtual span, Angle Fence, Section block and Costant height. Includes radioremot control with display.
- Automatic boom opening and closing
- V-Stop
- Centralized boom lubrication system
- Concrete shut-off valve
- High pressure water pump (150 bar - 15 l/min)
- Radio remote control: Hetriconic or HBC equipped with display
- Straight concrete piping on double layer boom with high wear-resistance chromium carbide inserts CIFA LLT Long Life Top
- Wide choice of customer personalization colours
- End hose length of 2.5 + 1 m
- \*Over 100 options available; details available on truck pumps optional booklet**

Distribution boom B4ZR 24/20



## Optional Smartronic Pro

 <b>Advanced Stability Control 2.0</b>	 <b>Antibouncing</b>	 <b>Boom Automatic Opening and Closing</b>	
 <b>Virtual span</b>	 <b>Angle fence</b>	 <b>Section block</b>	 <b>Constant height</b>

Smartronic Video

