



min. 4750\*

\* Technical data and features subject to change without notice

### Pumping unit technical data

		PB908L
Max. theoretical output	m <sup>3</sup> /h	90
Max. pressure on concrete	bar	81
Max. number of cycles per minute	No.	47
Concrete cylinders (diam. x stroke)	mm	200x1000
Concrete hopper capacity	l	500
"S" valve diameter	"	7
Hydraulic circuit		open

Lightweight construction to add more payload within 32.000kg weight limit.

Boom: 4 sections, pipeline diameter 100 mm, "Z" folding system, 3rd and 4th boom elements made of CARBOTECH composite material.

Wide range of truck chassis compatibility: 4 and 5 axles with different wheelbase.

### Control system with pumping unit PB908L and PB607L

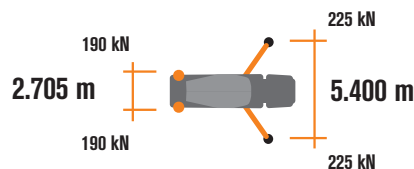
#### Easytronic

Colour LCD display	Pumping unit & drum management
Counters	Diagnostics

#### Control systems options



The LSC advanced limits the boom rotation to ensure machine stability whenever any front outrigger cannot be fully extended. Machine-front working is possible rotating the boom-pack vertically, with just 10% front outriggers opened.



### Concrete Mixer Technical data

		RH115
Nominal capacity	m <sup>3</sup>	9
Drum geometric volume	m <sup>3</sup>	14.6
Filling ratio	%	62
Max. drum speed	Rpm	14
Water tank capacity	l	800
Flow rate - Water pump pressure	l/min-bar	230/15
Flow meter scale	l	0-500

### Placing boom technical data

		MK35H
Pipeline diameter	mm	100
Max. vertical reach	m	34.1
Max. horizontal distance	m	29.8
Sections number		4
1st section opening angle		90°
2nd section opening angle		184°
3rd section opening angle		248°
4th section opening angle		250°
Rotating angle		-240°/+ 240°
End hose length	m	3



# CARBOTECH Series

# MK35H

Placing boom MK35H

## Standard equipment

Placing boom MK35H, 4 sections, pipeline diameter 100 mm, "Z" folding system

3rd and 4th boom elements made of CARBOTECH composite material

Ideal load distribution on the axles to obtain better driving stability

Fully hydraulic outriggers controlled on both sides of the machine with front extension and fixed rear outriggers

Drum made of special steel 450HB hardness 3 mm thickness or made of 30MnB5 steel 4 mm thickness

800l capacity water tank including water pump (PB908L)

Proportional boom control

Concrete flow regulator

Safety switch at concrete discharging hatch and hopper grid

Wiring and electronics protected against water and rust

Polymer rear mono-axle mudguards with rubber mudflaps

Aluminum hose/pipe holder on both sides with polymer rear mono-axle mudguards with rubber mudflaps

Two proportional radio remote controls with two boom movement speeds, synthesiser for automatic frequency search and concrete flow rate regulator, 20 mt cable supplied

Two additional chutes, with supports for their fixing on counterframe

Vibrator on the concrete hopper grid operated via remote control

Centralized lubrication system for pumping unit

Oil automatic lubrication system for pumping pistons

Additional manual lubrication system for pumping unit

Hard plastic outrigger support plates with relevant housing

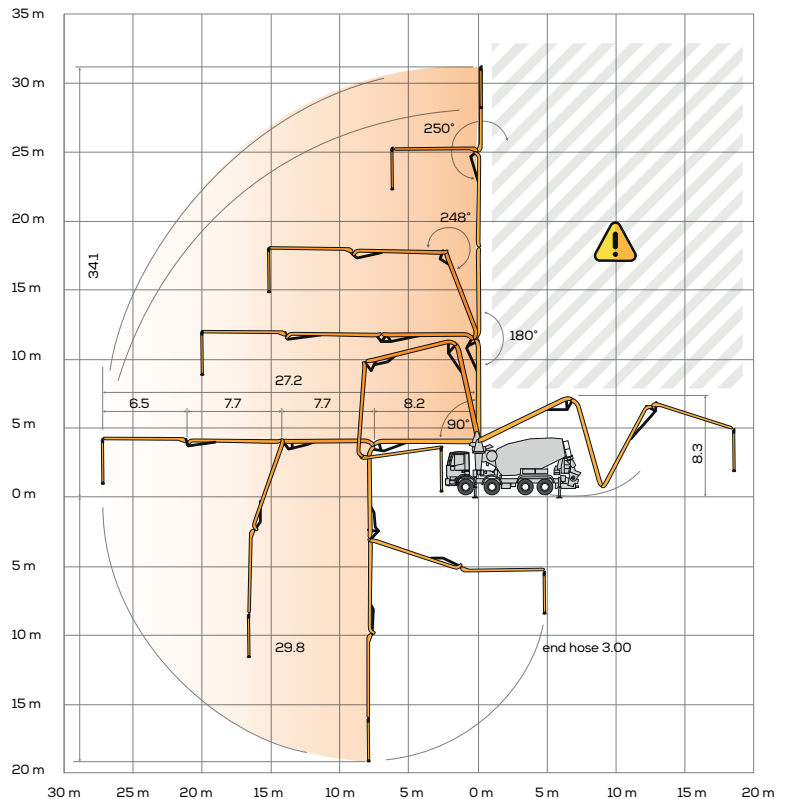
Night light for pumping unit hopper

Accessories for cleaning and washing

Automatic concrete discharging control with hopper concrete level sensor

Double thickness concrete pipes, in high resistant steel and chrome carbide insert - CIFA Long Life Pipes

Long life wear plate and cutting ring with hard carbide inserts



## Options

LSC advanced - Light Stability Control

Fiber-glass hopper cover

HBC Radio remote control, in place of the Hetronic supplied as standard  
Placing boom continuous rotation (not available with LSC)

800l capacity pressurized water tank (PB607L)

High pressure water pump + manual washing gun + cable retractor reel

"Ekos" dust blocking device for drum closing

Concrete shut-off valve

Aluminum hose/pipe holder on both sides (PB908L)

Video Smartronic

