



\* Technical data and features subject to change without notice

### Pumping unit technical data

		HP16o8EC
Max. theoretical production	m <sup>3</sup> /h	160
Max. pressure on concrete	bar	80
Concrete rods (diam.x.stroke)	mm	230 X 2100
Hopper capacity	l	550
Hydraulic oil circuit	-	closed

### Electric system

Pumping unit motor	kW	90
Stabilization / Boom motor	kW	30
Electric power supply	V/Ah	380/63-125
Electric cable length	m	40

### Steuerung

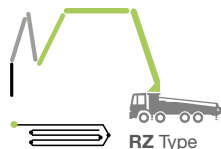
#### Smartronic gold

ASC Advanced stability control	Pumping unit management
MBE Maximum boom extension control	Diagnostics
LCD monitor	Rear capsense control panel
Auto RPM engine speed adjustment	

#### ASC is standard equipment



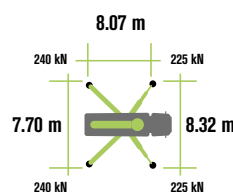
The automatic continuous verification of the center of gravity of the machine guarantees the maximum safety of boom movement and the maximum possible coverage of the job area, even with partial opening of the stabilization.



**MBE**  
Maximum boom extension control



**Automatic RPM Management**



### Battery

Type		Lithium-ion
Voltages	V	562 V
Power	kWh/Ah	17.2/30
Standard charging mode		220V/16Ah

### Placing boom technical data

		B5ZR 42/38
Pipeline diameter	mm	125
Max. vertical reach	m	41.1
Max. horizontal distance (from the center of the axis of rotation)	m	36.8
Min. unfolding height	m	8.3
Sections		5
1st section opening angle		90°
2nd section opening angle		180°
3rd section opening angle		180°
4th section opening angle		236°
5th section opening angle		223,5°
Rotating angle		+/-270°
End hose length	m	3



**X-ENERGY**

# K42E

**PATENT PENDING**

## Standard equipment

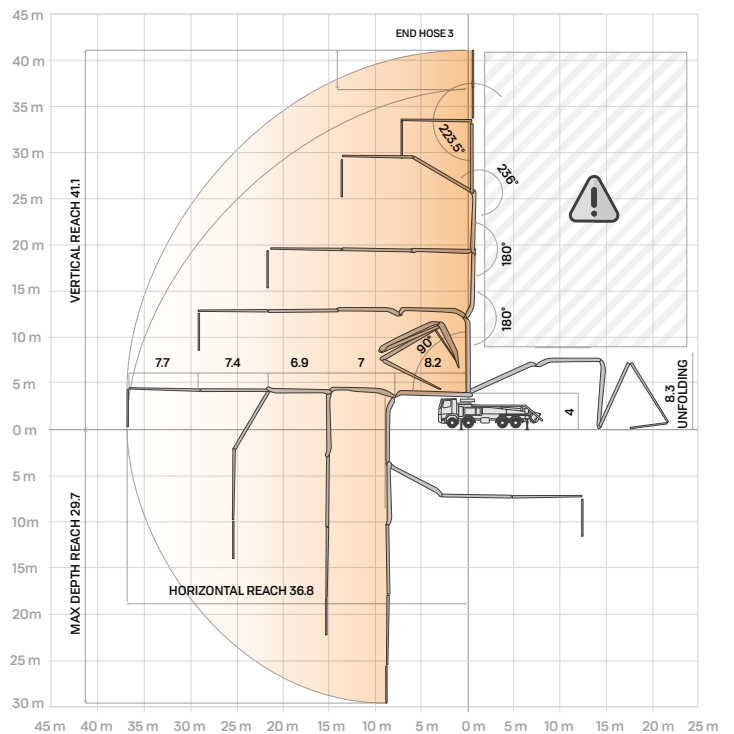
- Section I, II and III made of high strength steel
- IV, V made of light in carbon fiber
- Front "X" style diagonal outriggers with triple telescopic opening and swing-out rear outriggers for a quick and easy set-up also in narrow areas
- Driven by PTO or gear box
- Boom control by means of "Load Sensing" proportional distributor
- Safety device upon opening of concrete discharge door and hopper grille
- Emergency device for pumping group
- 2 Hetriconic proportional radio controls with 3 manipulators + display
- Emergency radio control cable 20 m
- n°2 plastic water tank with 300-litre capacity
- Medium pressure water pump (50 l/min - 50 bar)
- LED lights for stabilisation and hopper lighting
- Double layer piping with chromium carbide inserts on the entire piping line
- Washing accessories
- High resistance of the components most subject to wear ("S" valve, wear plate, compensating ring)
- Declaration of conformity supplied with the user and maintenance manual

## Main options

- High pressure water pump 28l / 120 bar
- Centralized boom lubrication system
- Concrete shut-off valve
- Straight concrete piping on double layer boom with high wear-resistance chromium carbide inserts CIFA LLT Long Life Top
- Radio remote control: Hetriconic or HBC equipped with display
- Smartronic Advanced: In addition to the Smartronic Gold functions, provides ASC2.0 stability control, ABC boom oscillation control (Antibouncing), automatic boom opening and closing. Includes radioremove control Hetriconic or HBC with display
- Automatic boom opening and closing

## Distribution boom

B5ZR 42/38



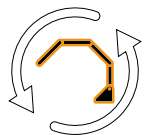
## Optional Smartronic Advanced



**Advanced Stability Control 2.0**



**Antibouncing**



**Boom Automatic Opening and Closing**

Video Smartronic



Video di prodotto

