

HX10Az

COMPACT EXCAVATOR



Gross Power
7.6 kW (10.35 hp)

Bucket Capacity
0.02 m³

Operating Weight
1165 kg

building a
comfortable
tomorrow

HYUNDAI

BREAKING STANDARDS IN PERFORMANCE & EFFICIENCY

Introducing the new HX10A Z, the smallest A-Series mini excavator in the range. It benefits from a brand-new Stage V Kubota engine, delivering 7.6 kW (10.35 hp) gross power. With greater lifting capacity and traction force, leading to fast cycle times, this compact, zero tailswing machine is designed to be powerful yet efficient.

▶ Zero tailswing design

An ideal machine for limited space construction sites. The superstructure swings within its own track width, reducing the risk of hitting obstacles to the rear.

▶ New longer boom and arm design

An extended reach and higher dump height help reduce machine repositioning, saving time on every cycle.

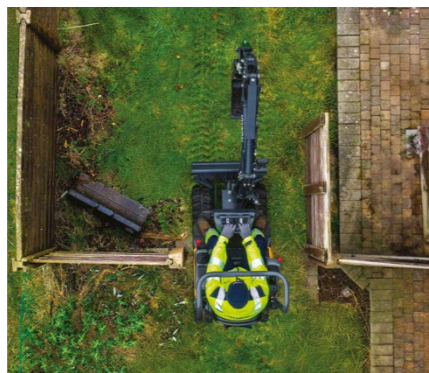
▶ Class-leading breakout force

Up to 30% greater bucket breakout force to help tackle the toughest jobs.



▶ 2-speed travel

This feature lets operators switch between high speed for fast site movement and low speed for precise positioning. This results in less wasted time, smoother control in tight spaces and a more efficient working day.



▶ Greater traction force

31% better thanks to increased track length, which improves pushing and grading performance.

▶ Compact dimensions

This allows easy, quick towing from one site to the next.



▶ Greater lifting capacity

A powerful 10.35 hp Kubota Stage V engine delivers improved digging, lifting, and grading performance in urban and indoor environments.

▶ Proportional auxiliary hydraulic flow

This provides easier maintenance with greater accessibility to pumps and valves.

Hydraulic accumulator

Benefit from faster hydraulic response when you need it. This enables smoother, more controlled movements with reduced shock and vibration, resulting in less operator fatigue over a long working day.

▶ Fast cycle times

Servo-controlled joysticks on the HX10A Z deliver quick, precise movements for faster cycle times.

2-way auxiliary piping

This feature allows greater compatibility with many hydraulic tools and faster changeover between tasks, to provide more machine versatility and flexibility on different job types. This also helps improve resale value.

Open-center hydraulic system

Variable displacement pumps help maximise hydraulic efficiency and smooth power delivery.

Robust box-structure

The box structure design provides high strength and durability, while minimising overall machine weight.

BREAKING STANDARDS IN COMFORT

With low noise and vibration levels, plus many easy to use and well-designed features giving total control and smooth operation, the HX10A Z mini excavator has been designed for maximum operator comfort and convenience.

► Ergonomically designed operator station

An intuitive joystick layout allows precise operation for maximum efficiency with minimum effort.

► Complete controllability

The track extension switch, blade selector switch and travel speed button enable quick adjustments to suit various tasks. Engine speed can also be controlled by adjusting a lever, from the lowest to the highest engine speed. Two pedals control the boom and the auxiliary line.



► Blade control lever

Allows the operator to adjust the width of the dozer blade to match any increase in the width of the undercarriage.

Low noise and vibration levels

The HX10A Z has been designed to make it ideal for indoor demolition and residential job sites.

Smoother operation

Boom and arm cylinder cushioning helps minimise shocks and vibrations for greater operator comfort.

Greater control

Swivel and tilting control consoles help improve posture and reduce operator fatigue during long operating hours.



► **Extendable undercarriage**
After pressing the track width adjustment switch, the chassis width can be changed to provide even greater stability. The minimum and maximum widths are 730mm -1,100 mm.

BREAKING STANDARDS IN SERVICEABILITY

The HX10A Z has been designed for easy servicing and maintenance with easy access to the main engine components. All the hydraulic hoses have been carefully routed out of harms way to avoid damage and costly downtime, while a cylinder over the boom protects it from damage.

► Easy component access

A maintenance panel under the operator's seat provides easy access to engine components, including the engine oil filter, fuse and dipstick.

► High-performance cooling system

The cooling system has been designed to ensure an optimal operating temperature is maintained, even when working in confined spaces.



Hi MATE

It's convenient, easy and valuable. Hi MATE, Hyundai's remote management system, utilises GPS satellite technology to provide customers with the highest level of service and product support available.

Increase productivity

By providing information such as service hours, and idle time, Hi MATE saves you money and improves productivity. Service alerts enable better maintenance planning.

Monitor your machines

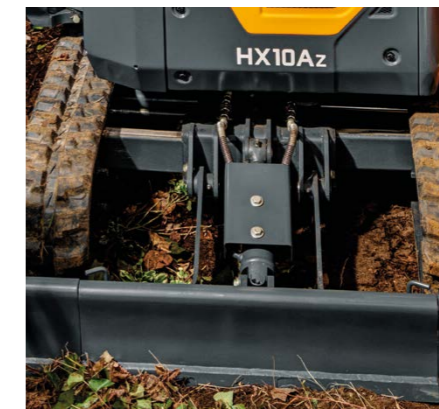
Hi MATE's real-time location information allows convenient monitoring of your equipment via the Hi MATE website or mobile app.

Improve Security

Protect your equipment from theft or unauthorised usage. Hi MATE's geofencing alerts notify you automatically when a machine leaves a predetermined zone.

Mobile fleet app

Our new mobile app provides all the information you need to run your equipment more efficiently and economically. It has been optimised for fleet management, providing health insights based on telematic technology to keep your machines working at maximum performance.



► Optimised hydraulic hose routing

Carefully placed hoses help reduce wear, accidental damage and cut downtime.

Lockable cap

This unique feature provides a secure access point for all maintenance checks.



► Arm & bucket guard

Protection has been added for the arm and bucket to further reduce any damage and downtime.

► Cylinder-over-boom design

Protects critical components from impacts and damage caused by working in confined job sites.

OUTLASTS ALL FOR SAFETY

Safety is a fundamental pillar of Hyundai machine design. The HX10A Z is engineered using high-grade components and a robust structural layout to ensure exceptional durability and stability in demanding applications. This advanced design supports confident, controlled operation and long-term reliability on every job site.

LED Working Light

The standard LED working light on the HX10A Z ensures clear illumination of the working area. It supports safe, accurate operation during low-light conditions and demanding daily tasks.

Built for stability

Both the blade and undercarriage have been designed to optimise stability during grading and stationary work.

Sturdy canopy structure

The machine's canopy has been designed to provide maximum protection to operators in tight working conditions.

Foldable canopy

The TOPS canopy folds down without tools and is integrated into the upper structure. This allows safe access through narrow passages and doorways.

Swing lock pin

The swing lock pin prevents movement of the upper structure when moving forward, such as when being transported or parked on uneven terrain. This helps prevent accidents or damage to surrounding areas.



TECHNOLOGY
TO KEEP YOU
SAFE

PROCARE. MORE CARE FOR YOU AND YOUR MACHINE.

ProCare, Hyundai's tailored maintenance packages work proactively via Hi-MATE by automatically delivering service kits directly to dealers before any service is due. This gives you peace of mind knowing that your machine will be serviced on time, with genuine parts and with no extra costs or inflationary increases. Choose the tailored maintenance packaged best suited for your needs.



TAILORED MAINTENANCE PACKAGES

MainCare

Stay ahead on service with Hyundai MainCare

MainCare keeps you ahead of maintenance with predictable costs and zero hassle:

- Lock in your filter costs for up to 4 years or 5,000 hours – no surprises, just smooth running.
- Oil sampling at 1,000 hours helps catch issues early and extend component life.
- Your dealer contacts you when service is due – no chasing, no delays.
- Filters always in stock – ready when you are.
- You choose: service it yourself or let your dealer handle it.

FullCare

Complete coverage and confidence with Hyundai FullCare

Everything you get with MainCare, plus up to 4 years extended warranty at discounted price – for complete coverage and confidence:

- Fixed filter costs.
- Proactive service reminders.
- Oil sampling with expert reports.
- Guaranteed parts availability.
- Extended warranty up to 4 years

KEY BENEFITS



Automatically delivered filter kits



Oil sampling every 1,000 hours



Fixed prices invoiced upfront



Uptime Centre and dealer support



HX10A Z SPECIFICATIONS

ENGINE		
Manufacturer		Kubota
Model		D722
Gross power	HP(kW)	10.35 (7.6)
Peak torque	Nm	39.4
No. of cylinders		3
Bore x Stroke	mm	67 x 68
Displacement	cc	0.7

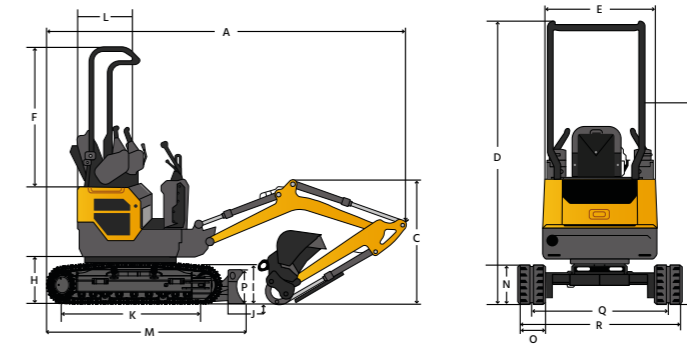
HYDRAULIC SYSTEM		
Main Pump	l/min	2 x 10.4 @ 2300rpm
Pilot Pump	l/min	3.1 @ 2300rpm
Max. pressure auxiliary line	bar	176
Fuel Tank capacity	L	14.2
Hydraulic Tank Capacity	L	10.8

PERFORMANCE		
Bucket breakout force (ISO)	kN	10.8
Arm breakout force (ISO)	kN	6.3
Max Gradeability	°	30
Drawbar Pull	kN	12.8
Travel Speed (low - high)	km/h	1.7 - 3.4

KEY SPECIFICATIONS		
Ext. Sound Level (ISO 6395)	dB (A)	91
Canopy Sound Level	dB (A)	76

HX10A Z DIMENSIONS & WORKING RANGE

MACHINE DIMENSIONS



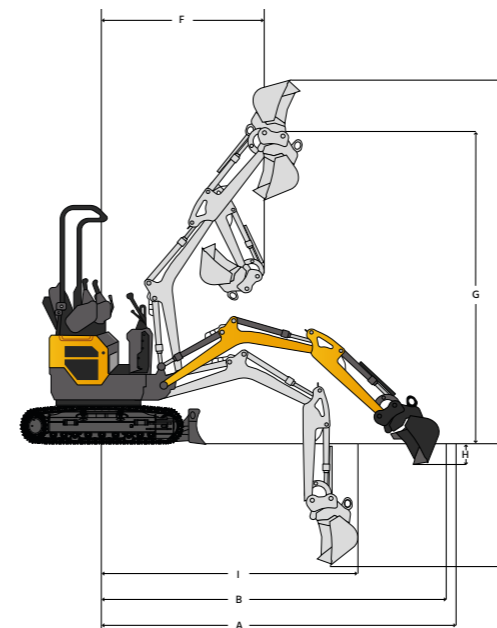
Unit : mm

	HX10A Z
Front	2-Pillar Canopy
Boom length	1450
Arm length	890
Bucket capacity (ISO)	0.02m ³
A Overall length	3010
C Overall height - Boom	1095
D Overall height - Canopy	2220
E Housing width	730
H Counterweight clearance	395
I Dozer lift clearance	227
J Dozer digging depth	220

	HX10A Z
K Tumbler distance	1025
M Track length	1353.1
N Track height	328.2
O Shoe width	-
P Dozer blade height	200
R Overall width (Retracted/Extended)	730/1100
Q Track gage (Retracted/Extended)	550/920
Distance to dozer end	890
Canopy width	730
Rear-end distance	550
Ground clearance	150
Rear swing radius	550

WORKING RANGE

Unit : mm



	HX10A Z
Boom	1450
Operating weight	1165kg
Bucket (SAE)	0.02m ³
Arm	890
A Max. Digging reach	3400
B Max. digging reach (ground)	3355
C Max. digging depth	2205
D Max. digging height	3050
F Min. swing radius	1410 (1110)
G Max. bucket pin height	2645
H Max. vertical wall depth	1025
I Max. radius vertical	2935



HYUNDAI

In Europe, Hyundai is operated and managed by:

HD Construction Equipment Hyundai Europe, Hyundaiiaan 4,
3980 Tessenderlo-Ham, Belgium T +32 14 56 22 00 E info@hyundai.eu
www.hyundai-ce.eu VAT BE0454495082

The information and data contained in this brochure is the property of HD Construction Equipment Hyundai Europe and has been compiled with the utmost care. Specifications and designs are subject to change at any time without notice. As general data, images and descriptions have been used in the brochure, Hyundai products may be fitted with non-standard equipment. The publication of this brochure cannot be regarded as an offer or proposal to contract and is intended for European markets only.



Scan to find out more
about this product.

Contact your Hyundai dealer.

hyundai-ce.eu/en/dealer-locator